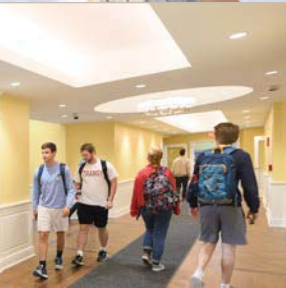




TRANSYLVANIA
UNIVERSITY

THIS IS IT.





EXPLORE

TRANSYLVANIA UNIVERSITY

- 4 WHO WE ARE
- 6 LEXINGTON
- 10 ACADEMICS
- 14 RESEARCH
- 16 TRAVEL OPPORTUNITIES
- 18 MAJORS AND MINORS
- 20 PIONEER SUCCESS
- 24 RESIDENCE LIFE
- 28 CAMPUS LIFE
- 30 COMMUNITY ENGAGEMENT
- 32 ATHLETICS
- 34 NEXT STEPS



TOP 100

**NATIONAL LIBERAL
ARTS COLLEGES**

(U.S. News, 2017)



WHO WE ARE

THIS IS IT—

the college experience you've
been dreaming about.

A big city full of adventure.

A place where you're encouraged to develop your
imagination and deepen your sense of who you are.

With professors who will prepare you for a successful
life and career long after you've graduated.

This is your training ground, your network, your
laboratory, your circle of friends—your home.



LEXINGTON

LIVE BIG

in Lexington, Kentucky

Forget what you think you know about Kentucky.
We're more than horses and bluegrass.

Lexington is a thriving, creative, friendly city. Our location in the heart of downtown means you can always find something fun—you're within walking distance of amazing restaurants, movie theaters, shops, concerts and festivals.

And just a short ride from beautiful hiking trails, horse farms, camping and canoeing.

And a short drive from cities like St. Louis, Nashville, Cincinnati, Chicago and Atlanta.

And an easy plane trip from Dallas, New York, Orlando and Washington, D.C.

What we're saying is there's no better place to be a college student.

1 of 19
ONLY **TOP-100 LIBERAL ARTS COLLEGES**

in a city with a population of **300,000+**

MORE
THAN **25**
Restaurants
WITHIN WALKING
DISTANCE OF CAMPUS

WHILE YOU'RE HERE:

See the horse races at Keeneland
Shop at The Square
Bike the Legacy Trail
Visit our many downtown murals
See a movie at Kentucky Theatre
Go to a concert
Check out a Legends baseball game

See more: visitlex.com



LEXINGTON OPPORTUNITIES ABOUND.

No waiting until after college to start your life. Hundreds of jobs and internships are within reach. Get creative with an exciting community.

Gain real-world experience to build your future.

That's our city.

That's Lexington.

Bloomberg

#25

BEST

AMERICAN CITY

Forbes
16th
*Best
Place*

FOR BUSINESS AND CAREERS

VOGUE

#9 U.S.
DESTINATION
TO Visit

#2 *Best*
MID-SIZED CITY
FOR NEW GRADS
(Online Degrees, 2018)

#8 U.S.
DESTINATION

(Lonely Planet, 2018)



Emily Novak had a part-time restaurant job in Lexington while in school. She turned that love for cooking—and her Transy science degree—into a full scholarship to Le Cordon Bleu culinary school in New Zealand.

Emily Novak '14

DOUBLE MAJOR IN CHEMISTRY
AND BIOLOGY

SOME OF THE EMPLOYERS THAT CALL CENTRAL KENTUCKY HOME:

Lexmark International
Toyota
Valvoline
Tempur Sealy International
Big Ass Solutions
Alltech Inc.
Lockheed Martin
A&W Restaurants Headquarters
KentuckyOne Health

ACADEMICS

ONE OF THE TOP SCHOOLS IN THE NATION.

Who am I? What does it mean to be human? What is success?

Transylvania will teach you to ask the deep questions of the world and seek out creative ways to find answers. You'll explore a broad range of subjects, while getting expert training in your major.

1/3
MAJOR
COURSES

THINK OF IT
THIS WAY:

1/3
GEN ED
COURSES

We'll help make you a well-rounded communicator and problem-solver, all while preparing you for success in your chosen field.

1/3
TO USE
HOWEVER YOU'D LIKE

TOP
10 %

AMERICA'S TOP
COLLEGES

(Forbes, 2017)



COLLEGE IN
KENTUCKY

FOR GETTING A JOB

(Zippia, 2017)

U.S. News & WORLD REPORT
#85
BEST
NATIONAL
LIBERAL ARTS
COLLEGES 2018

TOP
10

BEST COLLEGES
FOR YOUR MONEY
IN KENTUCKY

(MONEY Magazine, 2017)

#12

BEST

COLLEGES FOR
THE MONEY

(USA Today/College Factual, 2018)

TOP
70 %

BANG FOR YOUR
\$\$\$\$\$ BUCK \$\$\$\$\$

(Princeton Review, 2018)

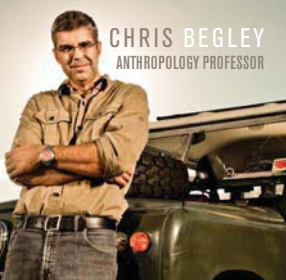
This is Transylvania University.

TAKE A CLOSER LOOK AT WHAT IT MEANS TO BE A PIONEER.



98%
of
faculty
HOLD THE HIGHEST
DEGREE IN THEIR FIELD

Average
CLASS
SIZE **15**



CHRIS BEGLEY
ANTHROPOLOGY PROFESSOR



THE FACULTY- STUDENT RELATIONSHIP SETS US APART.

The professors take pride in really getting to know you, challenging and drawing the best out of you. They'll walk with you the whole way—helping you find jobs and recommending you to graduate schools.

You'll work together on not just your research, but theirs. In collaboration with their professors, recent students have tested a virtual reality lab, scuba dived to study shipwrecks underwater and tracked personality traits in sparrows.

We don't use graduate assistants or teaching assistants, just professors who will give you the very best training there is.

Elle Woolery conducted excavation work with anthropology professor Chris Begley, and from her experience received a Davies-Jackson Scholarship to study archaeology at **Cambridge University**.

Elle Woolery '17

ARCHAEOLOGY GRADUATE STUDENT,
ST. JOHN'S COLLEGE, CAMBRIDGE UNIVERSITY

A photograph of Zoé Strecker, an art professor, in a workshop. She is a woman with long, dark, curly hair, wearing a brown apron over a light-colored, textured sweater. She is gesturing with her hands while speaking. In the background, a male student with glasses and a green shirt is visible, looking towards the camera. The workshop is filled with various materials and tools.

11:1

Student-to-Faculty

RATIO

Zoé Strecker engages her students in her research on Pine Mountain, where she takes on economic, social and environmental issues through art displays. She team-teaches a May term course at the state park that covers mountaintop removal, biodiversity and human culture in mining areas.

Zoé Strecker

ART PROFESSOR



RESEARCH

“Having a strong background in research is what graduate schools look for to determine if candidates will be successful. Having almost three years of experience by the time I graduate will help me stand out.”

Christine Phipps '19

RESEARCHES METALS FOUND IN
ORGANISMS THAT LIVE IN EXTREME
ENVIRONMENTS LIKE VOLCANOES



DON'T WAIT TO MAKE DISCOVERIES.

We make sure all of our students get the chance to do exciting, high-level research through grants, faculty collaboration and independent projects—much of which you can't get as an undergraduate student at other colleges.

You'll design your own studies and present your results. There's no limit to what you can find.

RECENT RESEARCH PROJECTS:

- The role of virtual reality in business and marketing
- A study of Mexican immigrant women in Lexington
- Exploring the need for post-release opioid abuse recovery
- The effects of wine consumption on insulin sensitivity
- Research at the Institute for Popular Democracy in Manila, Philippines

"My Transylvania education prepared me well for my seminars and personal research; I easily kept up with my peers from other national and international top colleges."

J.T. Henderson '18

STUDIED AT YALE UNIVERSITY'S SUMMER BIOETHICS INSTITUTE. THE PROGRAM HAS BEEN SO IMPRESSED BY OUR STUDENTS THAT IT SAVES SEATS EVERY YEAR JUST FOR PIONEERS—NO OTHER SCHOOL CAN SAY THAT. HE IS PURSUING DUAL GRADUATE DEGREES IN MEDICINE AND PUBLIC HEALTH, UNIVERSITY OF KENTUCKY.



TRAVEL
opportunities

OPEN DOORS TO PLACES YOU'VE NEVER IMAGINED.

Where will *you* study?

20 FULBRIGHT
ENGLISH TEACHING ASSISTANTS
SINCE 2007



GLOBAL AND INTERCULTURAL ENGAGEMENT

Transy offers countless opportunities to combine the excitement of travel with life-changing education experiences, no matter your major.

There are several different ways to study abroad—independently, through one of our partner institutions, for a semester, during the summer or as part of May term.

RECENT OPPORTUNITIES TO STUDY ABROAD:



Public Policy and the Culture of Health
NETHERLANDS



Tropical Ecology
BELIZE



Nanotechnology
FRANCE



International Accounting and Operations Management
GERMANY



Underwater Ruins
ILLYRIAN COAST



Biodiversity Conservation
PANAMA

PEACE CORPS PREP

Transylvania and the Peace Corps have a partnership that combines coursework, community service and professional leadership training to prepare you for post-graduate service in the Peace Corps, as well as careers in international development.

You'll get special consideration for acceptance should you apply to the Peace Corps after graduation.

Learn more: transy.edu/peace-corps

MAJORS & MINORS

Transy has a 4-4-1 schedule with two four-month terms and a unique four-week May term, where you'll take specialized classes, many of which involve international travel.

MAY TERM

Our unique May term offers four-week courses for you to try something outside your major—often with travel involved. These classes are exciting and creative, and may unlock a passion you never knew you had.

RECENT MAY TERM COURSES:

Arts of Anime
Historical Archaeology
Drawing on Ireland
Travel and Tourism in Chicago
The Bomb
Genetics and Athletics
Philosophy and Disability
Politics in the News

46 MA

Plus ADDITIONAL PREPROF

BACHELOR OF ARTS DEGREE OFFERED IN:

Accounting
Anthropology
Art
Art History
Biology
Biology: Ecology, Evolution, and Behavior Track
Biology: Molecular and Cellular Biology Track
Business Administration
Business Administration: Finance Track
Business Administration: Management Track
Business Administration: Marketing Track
Business Administration: Hospitality and Tourism Track
Chemistry
Chemistry: Biochemistry Track
Classics
Computer Science
Digital Arts and Media
Economics
Education—Elementary: P-5
Education—Middle Grades: 5-9
Educational Studies
English
Exercise Science

JOBS

AL MINORS AND ESSIONAL PROGRAMS

French Language and Literature
German Studies
History
International Affairs
Mathematics
Music Studies
Music Education
Music Performance
Music Technology
Neuroscience
Philosophy
Philosophy, Politics, and Economics
Physics
Political Science
Psychology
Religion
Sociology
Sociology/Anthropology
Spanish Language and Literature
Teaching Art
Teaching Chemistry
Theater
Writing, Rhetoric, and Communication

MINORS AVAILABLE IN MOST MAJORS AND:

Asian Studies
Classical Studies
Communication
Creative Writing
Education Minor for Secondary Certification (8-12)
Environmental Studies
Latin American and Caribbean Studies
Women's, Gender, and Sexuality Studies

PREPROFESSIONAL PREPARATION IN:

Health Professions: dentistry,
medicine, occupational therapy,
optometry, pharmacy, physical
therapy, veterinary medicine, nursing

Engineering
Law

SELF-DESIGNED MAJORS ALSO AVAILABLE

FOR EXAMPLE:

Sports Management	Child Study
Biopsychology	Intercultural Communication
International Security	Political Communication
Criminal Behavioral Studies	Nutrition and Sustainability
Social Justice	Historical Rhetoric

PIONEER SUCCESS

"To have faculty and staff that recognized my growth potential and pushed me toward that was indescribable. Having the tools like Career Development and resources like the DArt lab is such an asset to students who don't know how to hone their skills."

Lesley Goodaker '17

A VICE PRESIDENT FROM PURE DENTAL BRANDS ATTENDED HER TRANSY SENIOR SEMINAR PRESENTATION AND OFFERED HER A JOB ON THE SPOT.

95%

EMPLOYED OR
ENROLLED IN GRAD SCHOOL
WITHIN 6 MONTHS

PREPARING YOU FOR A FULFILLING CAREER IS OUR MISSION.

We know many students choose Transy to help them find their perfect career. Our faculty will work with you, helping to identify your strengths and passions and making a plan to get you ready for your dream job.

Plus, the Center for Academic and Professional Enrichment has programs in place to get you well on your way as soon as you get on campus:

100 DOORS TO SUCCESS

We'll connect you with a successful alumni mentor who will meet with you regularly throughout your four years to build your network and give you valuable advice.

CAREER DEVELOPMENT

Our Office of Career Development will walk you through the entire job search process and help connect you with employers. You can continue to meet with them long after you've graduated.

TAKE A LOOK AT SOME OF THE JOBS IN WHICH OUR GRADUATES EXCEL:

Uber | Senior Program Manager of Map Operations

NASA | Technical Advisor

Shepherd Therapeutics | Founder and CEO

CBS | Creative Director of Virtual Environments

Bank of America | Senior Vice President

Facebook | Engineering Manager

Walt Disney | Principal Project Engineer

Vantiv | Vice President of Cyber Security

Chief United States District Judge

Domino's | VP of Franchise Development and Recruiting

U.S. Equestrian Federation | Director of Sponsorship & Sales

Harvard College Women's Center | Director

U.S. Department of Defense | Analyst

Lexmark International | Analytical Chemist

ESPN | Vice President and Talk Show Host

PGA Tour | Senior Director Corporate Communications

Centers for Disease Control | Public Health Veterinarian
and Health Scientist

The Washington Post | Graphics Reporter

Smithsonian Institution | Chief of Exhibit Planning

Enuma | Educational Game Design Consultant



PIONEER
SUCCESS

COMPETE AT THE HIGHEST LEVEL.

"Transylvania gave me a leg up relative to the other applicants. My biology professor said I'd be really competitive and wrote a recommendation letter for me—I was very humbled by it and am grateful to her for pushing me."

Nashwin Laungani '15

CRALLE FELLOWSHIP (\$15,000 AND TUITION)
UNIVERSITY OF KENTUCKY SCHOOL OF DENTISTRY



Our students are consistently accepted to some of the most prestigious graduate programs in the country. And it's no surprise. The personal attention you receive from faculty, the depth of knowledge you gain and the development of your interpersonal communication preps you to compete against the nation's top minds. You'll be any graduate school's dream candidate.

GRADUATE SCHOOL PARTNERSHIPS

Transy has teamed up with the University of Kentucky to give our students a leg up on competitive graduate study.

PRE-ENGINEERING

While at Transy, take up to six engineering courses at UK at no additional cost. You'll be prepared to go straight into UK's graduate school for engineering, where you can earn a master's in as little as one year.

3+2 DUAL-DEGREE ENGINEERING

Earn a bachelor's degree from Transylvania in three years, and then a second bachelor's degree from the UK College of Engineering in two years.

UK EARLY ASSURANCE PROGRAM FOR MEDICINE

Transy has assured admission of up to three students per year into the University of Kentucky College of Medicine-Northern Kentucky Campus. You'll get special perks like exposure to hospital and office practice, shadowing and mentoring from physicians, MCAT preparation and a one-week boot camp to prepare you for med school.

3+4 PRE-PHARMACY AND PHARM.D.

Complete three years at Transylvania before going straight into pharmacy school at UK—the no. 6 pharmacy school in the nation according to U.S. News.

WHERE STUDENTS HAVE CONTINUED GRADUATE STUDY:

Brown University | Ancient History
Columbia University | Physical Therapy
Vanderbilt University | Nursing
London School of Economics | Gender, Media, and Culture
Duke University | Molecular Genetics and Microbiology
Johns Hopkins | Developmental Biology
American Graduate School (France) | Diplomacy and Law
New York University | French Literary Translation
Penn State University | Law
Clemson University | Architecture
University of Pittsburgh | Pharmacy
University of Virginia | Education
Indiana University | Medicine
Cambridge University | Archaeology
University of Central Florida | Game Design and Production
Xavier University | Clinical Psychology

100%
of our students
RECOMMENDED TO
LAW
SCHOOLS
ARE ADMITTED

MORE THAN
90%
of our students
RECOMMENDED TO
MEDICAL
SCHOOLS
& OTHER HEALTH
PROFESSIONS PROGRAMS
ARE ADMITTED

Learn more: transy.edu/graduate-partnerships

RESIDENCE
LIFE
welcome home

MAKE YOURSELF AT HOME.

More than anything, Transylvania is your home.

Sure, our suite-style residence halls have plenty of community spaces to work and study. But let's be honest, most of your memories will be made outside your studies—having fun and growing together with your friends.

That's why in all of our residence halls, we've created spaces for you to watch TV, play games and just hang out and make friendships that will last a lifetime.

CHECK OUT OUR NEW RESIDENCE HALLS



transy.edu/newhalls





3 NEW
suite-style
RESIDENCE HALLS

MORE
THAN **90%**
live ON CAMPUS



FRESH EATS

With multiple food options and more than 25 restaurants within walking distance, you'll never go hungry.

We've got you covered. Purchase one of our meal plans to use in any of our campus eateries. We'll even cater to your dietary restrictions, including gluten allergies.

We use local produce whenever possible, and we're a member of Kentucky's Farm to Campus Program.

This food stuff's important to us.

ON-CAMPUS DINING

Jazzman's Cafe
Rafskeller Grill (Grille and
Sub Connection)

MEAL PLANS

10 meals per week
14 meals per week
19 meals per week
160 meals per term
Included in room and board

BRAND NEW FOR 2020.



Transylvania is building a new campus center and dining facility that is planned to open in fall 2020. It will have student activities, a café, a fitness center, an amphitheater, common areas and much more.

We're committed to life outside the classroom, and this new campus center will be a place where you'll become a student leader, build your health and wellness and have unforgettable experiences with your friends.

We can't wait for you to enjoy it.

See more: transy.edu/campus-center

45%
Campus
EXPANSION
in the last 10 years

A photograph of a student with blonde hair and glasses, wearing a black shirt, lying in a red hammock. The student is smiling and looking towards the right. The background is a blurred outdoor camp setting with wooden structures and other people in the distance.

CAMPUS
LIFE

FIT IN. STAND OUT.

Our students are part of a family that grows together, learns together and has fun together. You'll find people who share your interests and people who will challenge you.

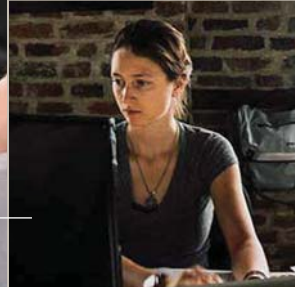
Join one of our more than 50 campus clubs and organizations, where you can show your creativity, be a leader, get fit and have a great time. Or start your own. It's all up to you.

JUST A FEW OF THE ACTIVE ORGANIZATIONS:

Black Student Alliance
Fellowship of Christian Athletes
Inter-Faith Alliance
The Rambler Student Newspaper
Student Organization of Latinos
Speech and Debate Team
Student Activities Board
Student Government Association
Transy Bikes
Transylvania Theatre Guild



50+
Campus Clubs
& ORGANIZATIONS



“Transy Bikes made me get on my feet and figure out how to get something done. It boosted the way I interact with people—improved my interpersonal communication.”

Stevie Morrison '15

HELPED FOUND TRANSY BIKES, WHICH RENTS FREE BIKES, RUNS A CAMPUS BIKE SHOP, TEACHES MAINTENANCE AND HOSTS CYCLING OUTINGS AROUND BEAUTIFUL CENTRAL KENTUCKY. SHE TURNED HER EXPERIENCE INTO A FULL-TIME JOB WITH BULLHORN CREATIVE

GREEK LIFE

Around half of our students are in a fraternity or sorority. And it's not just fun and games—our Greek life is about academic excellence, leadership development and community engagement while making lifelong friends.

FRATERNITIES

Delta Sigma Phi
Kappa Alpha Order
Phi Kappa Tau
Pi Kappa Alpha

SORORITIES

Alpha Omicron Pi
Chi Omega
Delta Delta Delta
Phi Mu



COMMUNITY
ENGAGEMENT

LEARN AND GROW IN A VIBRANT CITY.

We believe that engaging with the community around us is of the utmost importance, and there are plenty of opportunities to partner with local organizations to make a difference in Lexington.

You'll develop leadership skills and grow as a citizen and neighbor—and have a lot of fun along the way.

#TransyPartners



LOCAL TRANSY PARTNERS:

Habitat for Humanity
Carnegie Center for Literacy and Learning
The Nest Center for Women, Children
and Families
Seedleaf
God's Pantry Food Bank
Glean KY

London Ferrill Community Garden
Kentucky Refugee Ministries
Arbor Youth Services
Fayette County Schools
Common Good
And many more

"I really like the connection with the Lexington community, since after college I want to work with a community-based organization. Already having that relationship and getting that experience is something that means a lot to me."

Aaron Martin '19

VOLUNTEER GRANT RESEARCHER AT THE NEST CENTER FOR
WOMEN IN DOWNTOWN LEXINGTON



ATHLETICS

27

INTERCOLLEGIATE

ATHLETIC

Teams

- M** Baseball
- M W** Basketball
- M W** Cheerleading
- M W** Cross-Country
- M W** Dance
- M W** Equestrian-Eventing
- W** Field Hockey
- M W** Golf
- M W** Lacrosse
- W** Triathlon
- M W** Soccer
- W** Softball
- M W** Swimming and diving
- M W** Tennis
- M W** Track and field
- W** Volleyball

More than

50

CONFERENCE
CHAMPIONSHIPS

since 2004

STUDENT
41%
ATHLETES



More than
500
Academic
ALL-CONFERENCE
SELECTIONS
since 2004



PLAY HARD.

Our Pioneers know what it takes to win.

They train and compete in state-of-the-art facilities with a highly skilled athletics staff and die-hard fans cheering on their every move. Our coaches support our athletes' academic pursuits while pushing their players to perform at the highest level—for conference and national championships.

INTRAMURAL SPORTS

KICKBALL ▪ BASKETBALL ▪ 3-ON-3 BASKETBALL
ULTIMATE FRISBEE ▪ FLAG FOOTBALL ▪ VOLLEYBALL

PIONEERS™

ADMISSIONS CHECKLIST

THE 5-STEP GUIDE FOR APPLYING TO TRANSYLVANIA UNIVERSITY

1 SCHEDULE YOUR CAMPUS VISIT

Our admissions office is open for visits Monday-Friday and select weekends. Individual visits are available weekdays and select Saturdays. Visit classes; talk to professors or coaches; even stay overnight and get the full Transy experience. Check out transy.edu/visit for all visit options.

2 CHOOSE YOUR APPLICATION PLAN AND APPLY

Students who wish to receive priority consideration for admission, merit scholarships and Premier Scholarships must apply by the Early Action I (Oct. 31) or Early Action II (Dec. 1) plan. Regular Decision applicants must apply by Feb. 1 and will be considered for admission and merit scholarships.

We have a test-optional policy, so you don't need to send us your ACT or SAT scores if you don't feel they are an accurate representation of your academic ability. Read more at transy.edu/test-optional.

3 EXPLORE SCHOLARSHIP OPPORTUNITIES

While academic credentials are most important, we also consider your essay, letter of recommendation, involvement and leadership when awarding scholarships. Apply Early Action I or II to be considered for our Premier Scholarships: William T. Young, William R. Kenan and Trustee scholarships. All other scholarships require application by Feb. 1.

4 APPLY FOR FINANCIAL AID

To apply for all forms of need-based aid, you need only to fill out the Free Application for Federal Student Aid (FAFSA). This form is required for students seeking any federal or state aid (including grants, loans and work-study). The FAFSA is available for submission as early as Oct. 1.

5 RESPOND TO ADMISSION DECISION BY MAY 1

May 1 is the National Candidate Reply Date, the deadline to make your college decision. Make sure you take advantage of every opportunity to compare Transylvania against your other college choices. We are here to help; contact us anytime at (800) 872-6798 or admissions@transy.edu.

OCT 1

File the FAFSA
as early as Oct. 1

OCT 31 *

Early Action I
Deadline

DEC 1 *

Early Action II
Deadline

FEB 1

Regular Decision
Deadline

MAY 1

National Candidate
Reply Date

*DEADLINES FOR PREMIER SCHOLARSHIP CONSIDERATION



• SEE FOR YOURSELF.
PLAN YOUR VISIT TODAY.

Drive Times

Louisville
1 hr

—
Cincinnati
1.5 hrs

—
Columbus
3 hrs

—
Indianapolis
3 hrs

—
Nashville
3.5 hrs

—
Chicago
6 hrs

—
Atlanta
6.5 hrs

—
**Washington,
D.C.**
8.5 hrs

transy.edu/visit

Transylvania University is a highly ranked private college in the heart of Lexington, Kentucky. We're a challenging, relationship-rich university with an engaging faculty that encourages community-driven students to achieve personal fulfillment and professional success.

ENROLLMENT: Approximately 1,000 students

FOUNDED: 1780 as the 16th college in the U.S.

PRESIDENT: Seamus Carey

STUDENT/FACULTY RATIO: 11:1

AVERAGE CLASS SIZE: 15

MAJORS: 46, with the opportunity to design your own

SUCCESS RATE: 95% are employed or in graduate school within 6 months of graduation

STUDENT ORGANIZATIONS: 50+

INTERCOLLEGIATE ATHLETIC TEAMS: 27

AFFILIATION: Christian Church (Disciples of Christ), although the campus community embraces individuals of all faiths and spiritual practices

CONTACT US

Office of Admissions

300 North Broadway

Lexington, KY 40508

(859) 233-8242 | (800) 872-6798

admissions@transy.edu

transy.edu

